

Sink S1000

Bowl on the left

Kitchen Sinks

Code: 1812 162



DETAILS

Edge/Installation Type	Standard (8 mm Edge)
------------------------	----------------------

Finish	Foster brushed
--------	----------------

Material	AISI 304 stainless steel
----------	--------------------------

Texture	Foster brushed
---------	----------------

Base	80-90 cm
------	----------

Dimensions	1160 x 500 mm
------------	---------------

Standard fittings	Fixing hooks, gasket, drain, overflow and siphon, boxed packing
-------------------	---

Mixer holes	1 standard hole - 2nd hole on request
-------------	---------------------------------------

Built-in hole	1140 x 480 mm
---------------	---------------

Drainer	Yes
---------	-----

Width	116 cm
-------	--------

Bowl dimension	360x400mm
----------------	-----------

Number of bowls	2 bowls
-----------------	---------

Waste fitting	3,5" drain
---------------	------------

FEATURES

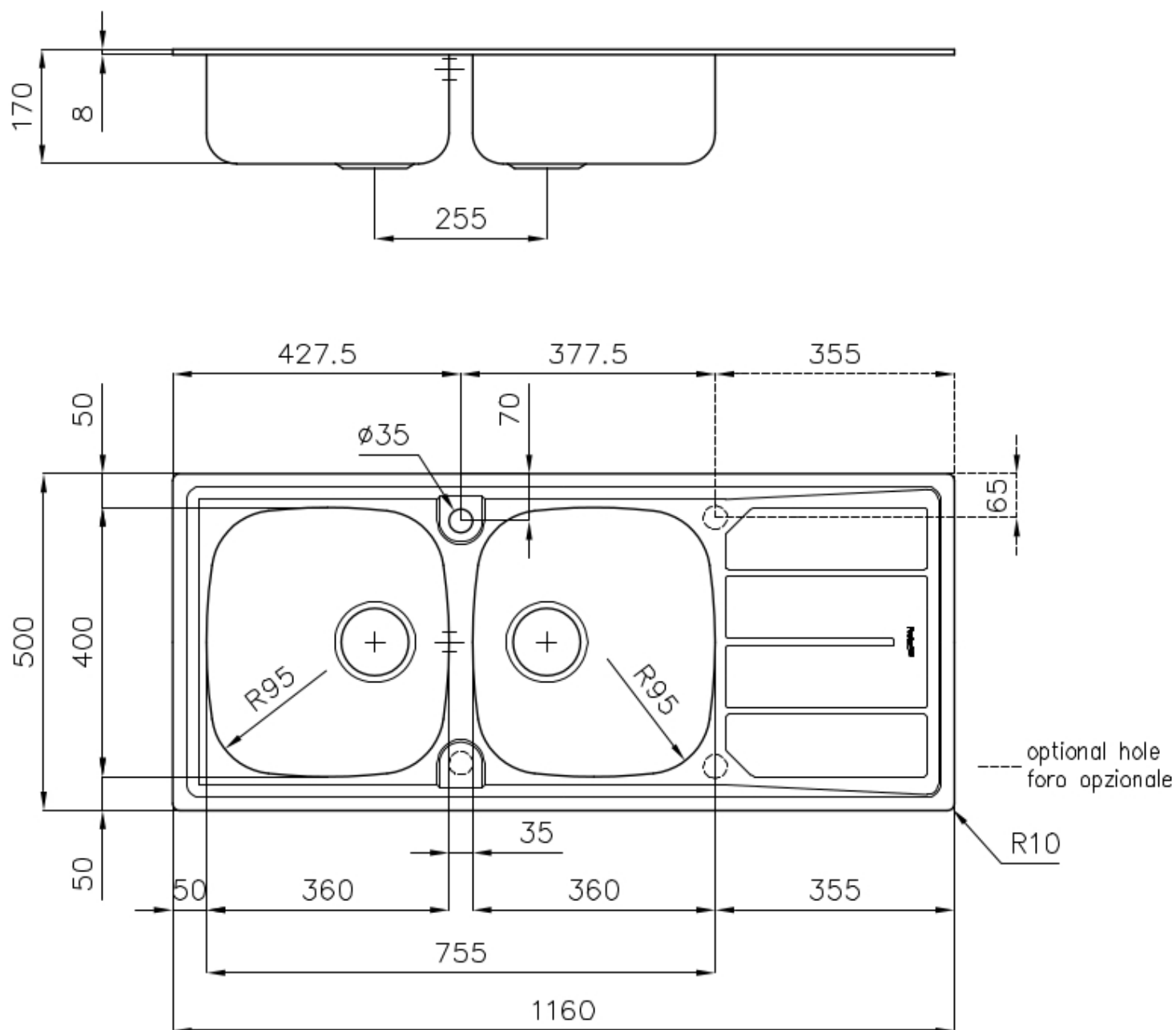
2nd / 3rd hole available	The sink can be customized with the execution on request of additional holes, usable for double-hole mixers, for remote controlled drains or for the installation of soap dispensers. The positions are marked on the drawings with dotted line holes.
--------------------------	--

Added value	Foster uses steel thicknesses higher than those used on average by other manufacturers. This is how, thanks to our long experience, we know how to make sinks of superior quality and with a better resistance to aging.
-------------	--

Basket 3,5" waste fitting	The drain is equipped with a large 3.5" drain, with the practical basket cap that prevents the discharge of solid parts.
---------------------------	--

Sliding brackets	
------------------	--

TECHNICAL DATA



OPTIONAL ACCESSORIES



HPDE Chopping board
8657 001



Stainless steel basket
8611 000

RECOMMENDED PAIRINGS



Mixer Tap Lorenzo
8466 000



Mixer Tap S1000 - RO
8443 002

OPTIONAL AUTOMATIC WASTE FITTINGS



Automatic waste fitting
8407 100



Automatic waste fitting
8407 000



LIRA automatic waste fitting
8407 102



LIRA automatic waste fitting
8407 103